

SHANGHAI ONBON TECHNOLOGY CO.,LTD

Sensor Connection User Manual For YQ Series

2015-10-9

Copyright

All rights reserved. No part of this publication may be reproduced in any form by print, photo print, microfilm or any other means without written permission by ONBON.

© 2010-2014 Onbon

Version History:

版本号	日期	作者	描述
1.0	2015-10-9	陈敏	异步全彩控制器传感器连接与使用方法

CONTENTS

1. Sensor Display Effect.....	4
2. Preparation.....	5
3. Connection.....	6
3.1 Temp sensor connection.....	6
3.2 Temp&humidity sensor connection.....	9
3.3 Brightness sensor connection.....	12
3.4 Noise sensor connection.....	14
4. Contact Us.....	18

Sensor Connection User Manual For YQ Series

1. Sensor Display Effect

YQ series support: Temperature sensor/Temp&humidity Sensor/Noise sensor/Water sensor/Liquid sensor/Brightness sensor.



2. Preparation

To display the sensor should prepare the below list: LedshowYQ 2015 Software, one card such as (BX-YQ1、BX-YQ1_75、BX-YQ2、BX-YQ3、BX-YQ4) ,sensor and one pcs of BX-MF, Power, serial cable.

3. Connection

3.1 Temp sensor connection

user must make sure the YQ series card can communicate successfully with the LedshowYQ 2015 user must make sure the control card can communicate successfully to LedshowYQ 2015 software.

Step 1

Connect the temp sensor to the BX-MF as in this picture:



Step 2

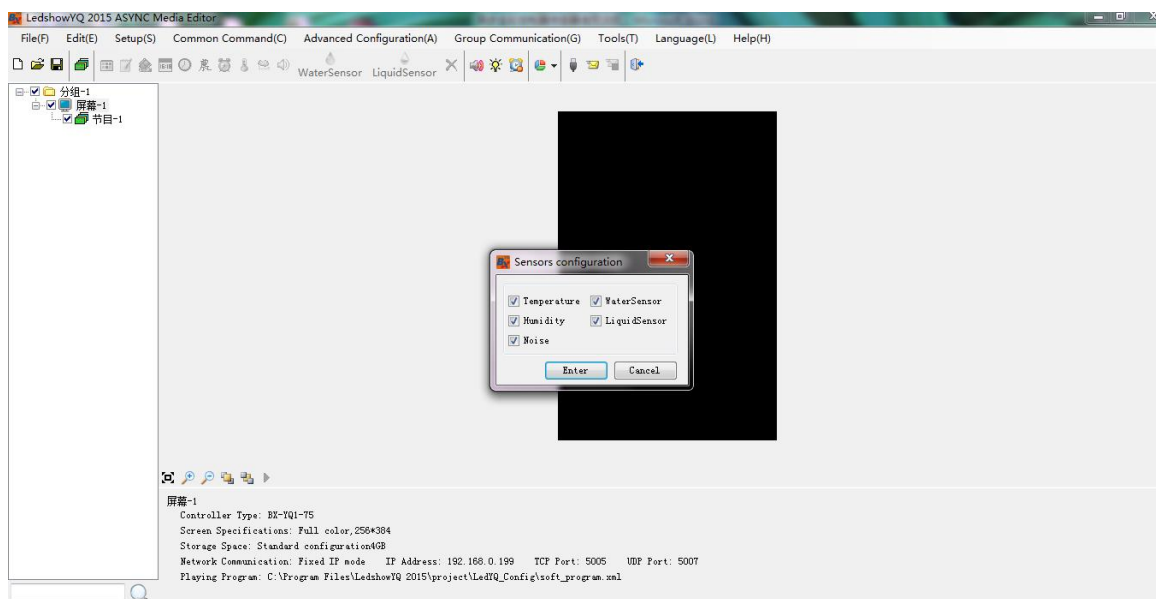
Use the serial cable to connect the BX-MF and YQ series control card, as shown in this picture:



Step 3

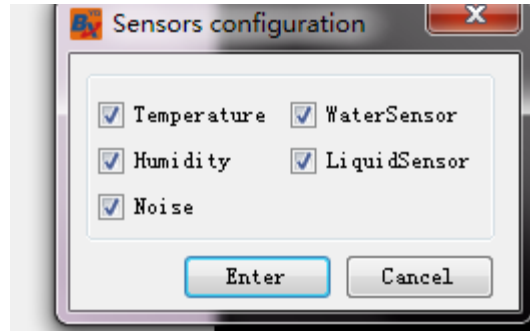
Open LedshowYQ 2015 software, select “ sensor configuration” in the “ advanced configuration” as shown in this picture:

Open LedshowYQ 2015 software, select the “ sensor configuration” in the “advanced configuration” as shown in this picture



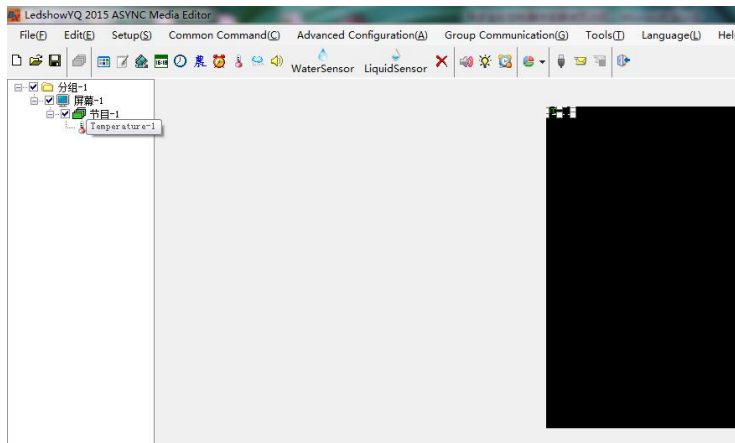
Step 4

Select the temperature as shown in this picture



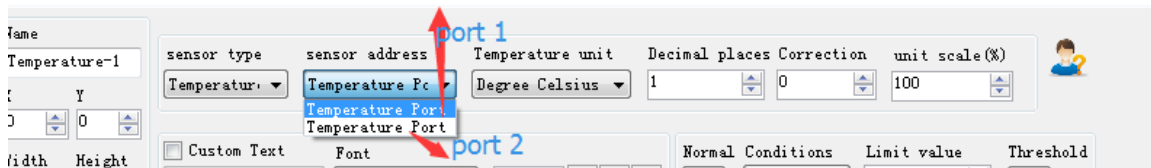
Step 5

Add temperature area in the program



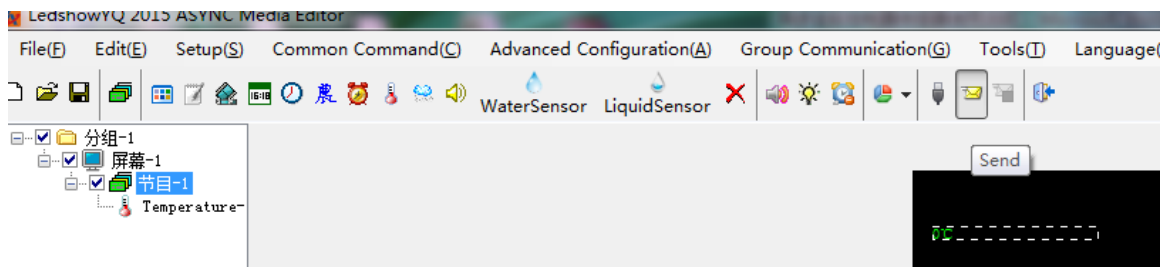
Step 6

Firstly select the sensor type as temperature, then select sensor address (the address is shown in the BX-MF as: temperature port 1 and temperature port 2)



Step 7

Click the send button will be ok.



LED screen will show as in below:



3.2 Temp&humidity sensor connection

User must make sure the YQ series card can communicate successfully with the LedshowYQ 2015

Step 1

Connect the temp& humidity sensor to the BX-MF as shown in this picture:



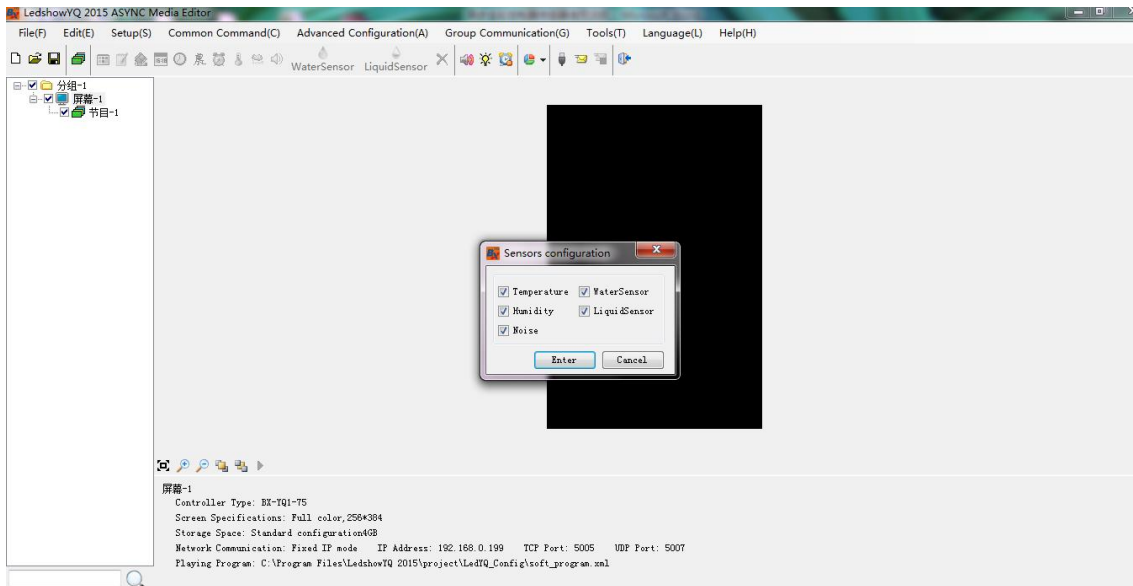
Step 2

Connect the serial cable with the BX-MF and BX-YQ series card, as shown in this picture



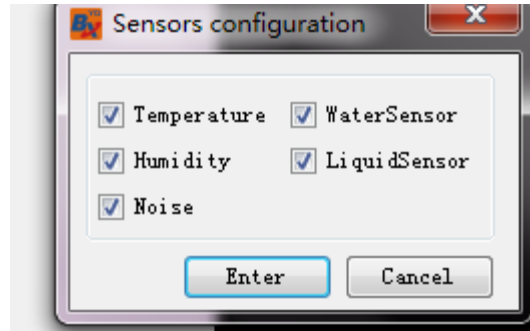
Step 3

Open LedshowYQ 2015 software, select “ sensor configuration” in the “ advanced configuration” as shown in this picture:



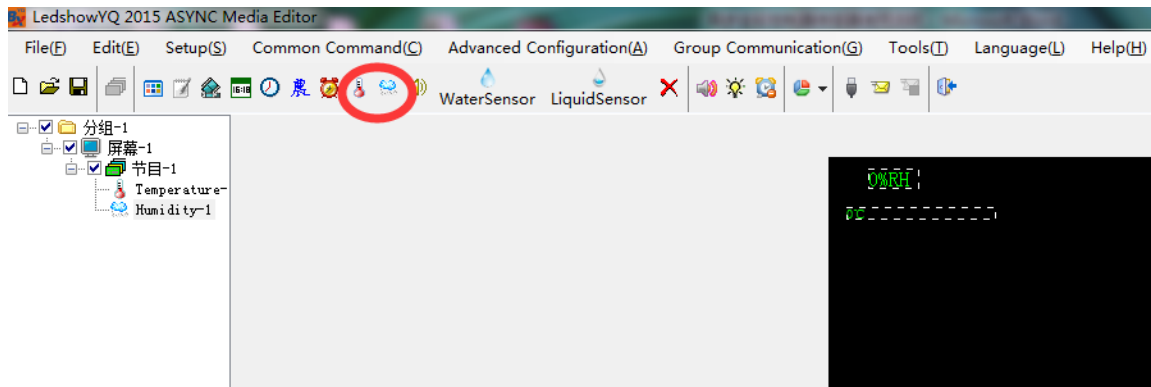
Step 4

Select the temperature and humidity ,as shown in this picture:



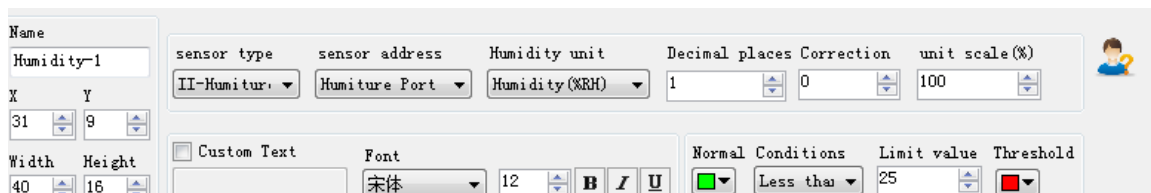
Step 5

Add temperature area and humidity area in the program as shown in this picture:



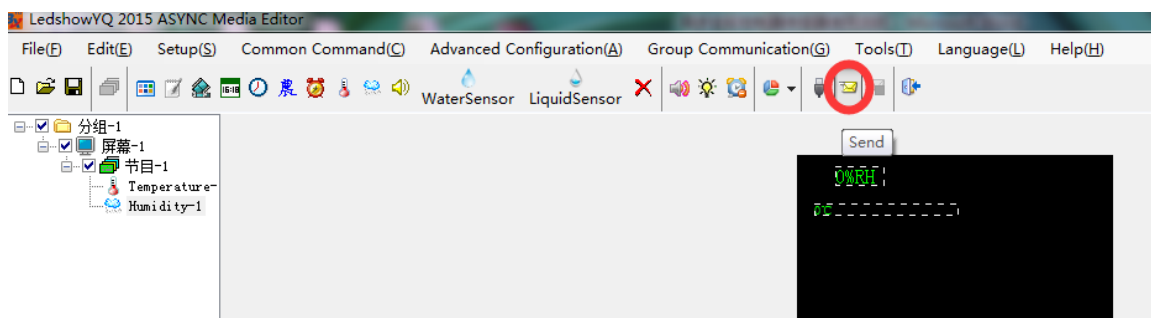
Step 6

Firstly select the sensor type as II-Humidity, then select sensor address(the address is shown in the BX-MF as: humidity port 1 and humidity port 2)



Step 7

Click the send button will be ok:



LEDdisplay effect is as below:



3.3 Brightness sensor connection

user must make sure the YQ series card can communicate successfully with the LedshowYQ 2015

Step 1

Connect the brightness sensor cable to the BX-MF, red cable, green cable, blue cable and black cable connection order is same as in this picture:



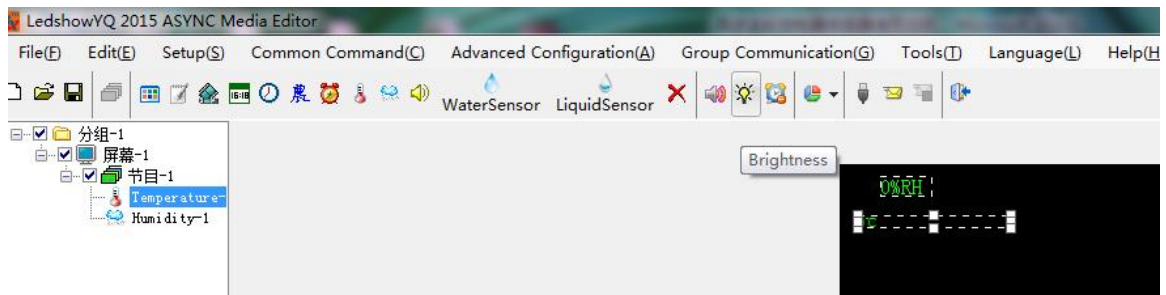
Step 2

Use the serial cable to connect the BX-MF and YQ series control card, as shown in this picture:



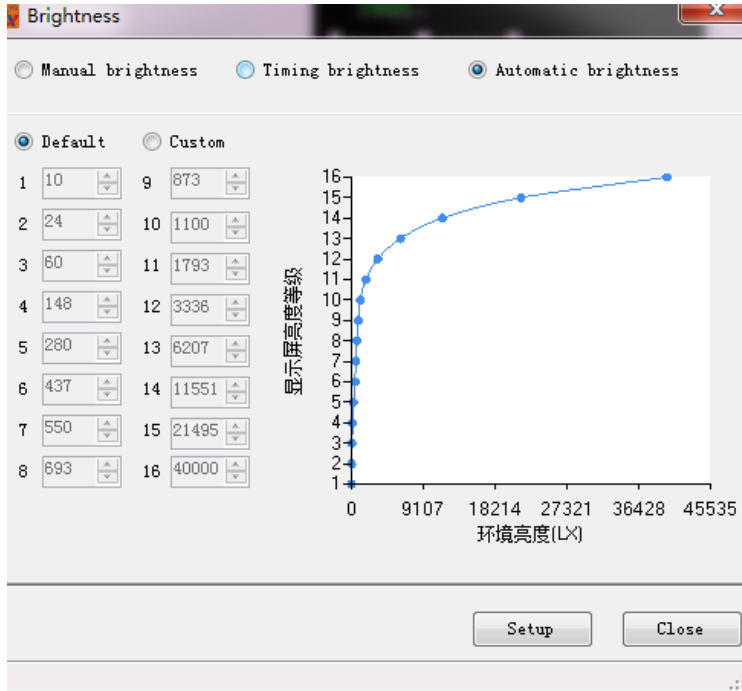
Step 3

Open LedshowYQ 2015 software, click the brightness button in the menu as below picture:



Step 4

select “automatic brightness” then click setup button will adjust the LED display brightness according to the ambient brightness of LED display screen.



3.4 Noise sensor connection

user must make sure the YQ series card can communicate successfully with the LedshowYQ 2015

Step 1

Connect the noise sensor to the BX-MF, then noise meter connect the power and open the power



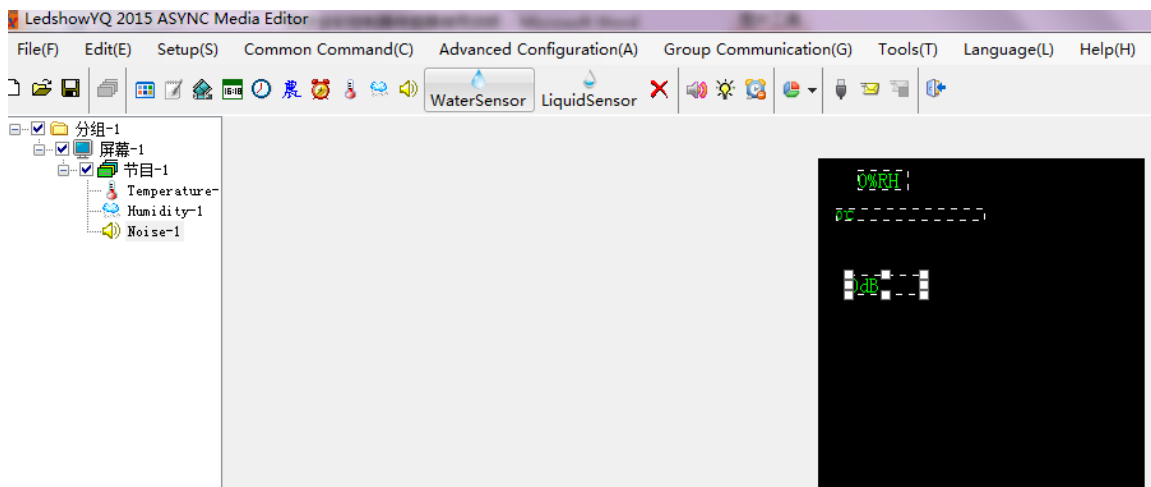
Step 2

Use the serial cable to connect the BX-MF and YQ series control card, as shown in this picture:



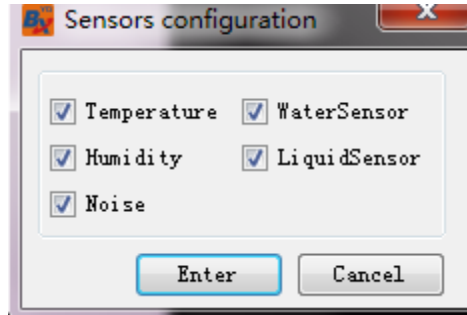
Step 3

Open LedshowYQ 2015 software, select “ sensor configuration” in the “ advanced configuration” as shown in this picture:



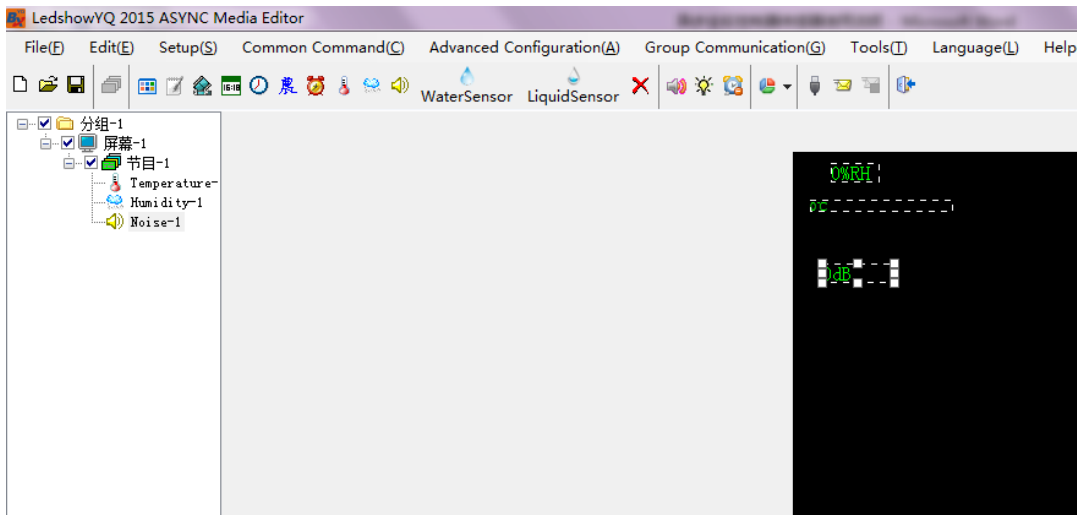
Step 4

Select the noise option, then click enter will be ok:



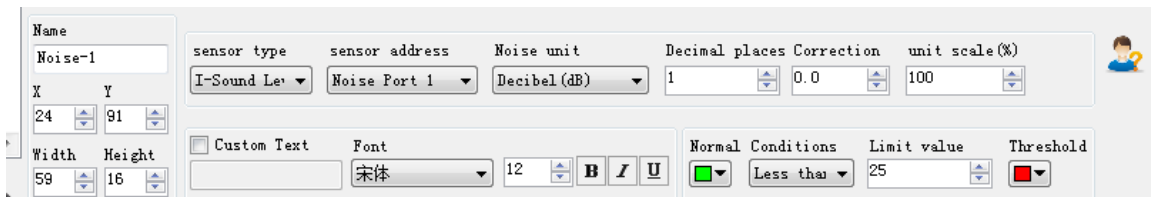
Step 5

Add the noise area in the program as in this picture:



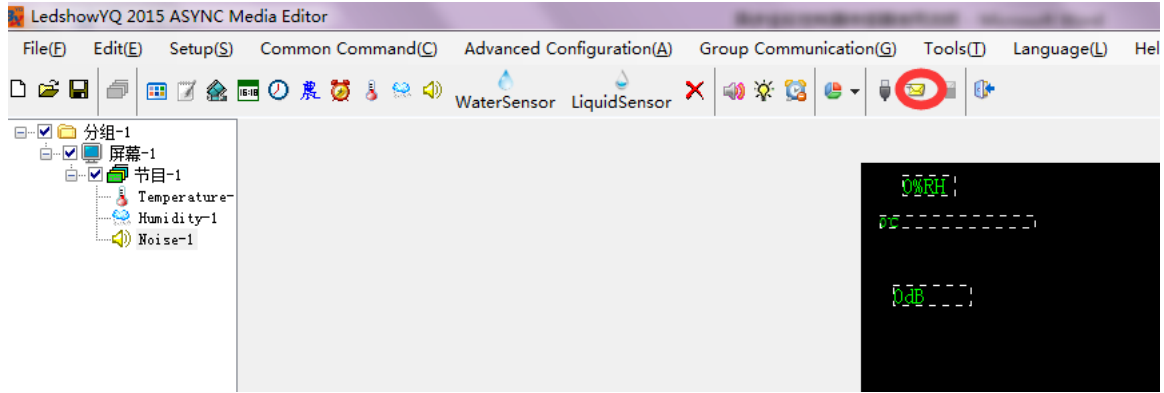
Step 6

Select the noise area then select the sensor type, I - sound level is equal to AWA5636-3, II - sound level is equal to HS5633T, III- sound level is equal to AZ8921 :



Step 7

Click send will be ok:



4. Contact Us

SHANGHAI ONBON TECHNOLOGY CO.,LTD

Add:Floor 7, Tower 88, 1199#, North Qinzhou Road, Xuhui District, Shanghai,China

Tel: 86-512-36912687 86-15921814956

Fax: 86-512-36912670

Email: onbon@onbonbx.com

Skype: yolanda_zhou2010

QQ:2463728439

whatsApp:15921814956

Website: www.onbonbx.com www.onbonbx.en.alibaba.com